

## EXPEDITION REPORT :

MT. MERAG - III 6480 MTR (GRID REFERENCEN 33°47.2049' E 078°29.3223')

&

MT. KANGJU KANGRI - 6710 MTR (GRID REFERENCEN 33° 43' 32" E 078° 31' 39")

### 1. Expedition Details:

- (a) Peak Name :Mt. Merag – III 6480M& Mt. Kangju Kangri – 6710 M
- (b) Expedition Leader : Colonel Hem Chandra Singh, Principal JIM and WS
- (c) Expedition Start Date: 24 July 2025
- (d) Summit Date: Mt. Merag – III summited on 29 July 2025 at 0855 hours &  
Mt. Kangju Kangri summited on 02 August 2025 at 1513 hours

### 2. Team Composition:

Total Team Members: 10

S. No.	Rank & Name	Mt Merag - III	Mt Kangju Kangri	Remarks
1.	Colonel Hem Chandra Singh	Summiter	Summiter	Team Leader
2.	Sub Maj/ Hony Lt (Retd) Shri Rafiq Ahmad Malik	Summiter	Summiter	Member JIM&WS
3.	Hav Sajad Hussain	Summiter	Summiter	Member JIM&WS
4.	Nk (NA) Yogesh	-	-	Member JIM&WS
5.	Nk Bharat Singh	Summiter	Summiter	Member JIM&WS
6.	Sub Maj Hajari Lal	Summiter	Summiter	Member NIM
7.	Sub Bhupinder Singh	Summiter	-	Member NIM
8.	Mr Robin Gurung	Summiter	Summiter	Member HMI
9.	Mr Zobin Roy	Summiter	Summiter	Member HMI
10.	HC Hilal Ahmad	Summiter	Summiter	Member CRPF

### 3. Permission and Notification:

- (a) As a National Mountaineering Institute, No external agency permission is required.
- (b) Ministry of Defence (DHMI), Army Adventure Wing and Indian Mountaineering Foundation was informed in advance for the conduct of this expedition by JIM & WS.

### 4. Expedition Objectives:

- (a) Promote adventure tourism in the Country especially in border areas of Ladakh (UT) and Jammu Kashmir (UT).
- (b) Igniting the spirit of adventure among participants and spectators alike.
- (c) Divert the energy of youth towards nation-building and adventure sports.

5. **Expedition Itinerary:**

S.NO.	DATE	ACTIVITY	FROM	TO	TIME TAKEN	REMARKS
(i)	24 July 2025	Flag-Off at Sonamarg & Moved to Leh	Sonamarg	Leh	10 hrs	Flag –Off by Colonel Hem Chandra Singh (Principal JIM&WS)
(ii)	25 July 2025	Leh to Road Head	Leh	Mt Merag Road Head	-	Journey By Vehicles
(iii)	26 July 2025	Recce Cum Acclimatization	Road Head	Base Camp	-	Recce of Mt Merag
(iv)	27 July 2025	Moved For Base Camp	Road Head Camp	Base Camp	3 - 4 hrs	Mt Merag Base Camp
(v)	28 July 2025	Recce & Rope Fixing	Base Camp	Recce, Rope Fixing & Route Opening		Mt Merag Route opening
(vi)	29 July 2025	Summited Mt Merag – III	Base Camp	Summit of Mt Merag – III (6480M)	07 hrs	Summited Mt Merag– III at 0855 hrs on 29 July 2025 <b><u>Grid Reference</u></b> <b><u>N 33°47.2049' E</u></b> <b><u>078°29.3223'</u></b> <b><u>Recorded in GPS</u></b>
(vii)	29 July 2025	Road Head Mt Kangju Kangri	Summit of Mt Merag – III	Road Head Mt Kangju Kangri		Established Road Head Camp of Kangju Kangri
(viii)	30 Aug 2025	Recce of Mt Kangju Kangri	Road Head Camp	Recce of Mt Kangju Kangri	0830 hrs To & Fro	Recce
(ix)	31 Aug 2025	Move To Base Camp	Road Head Camp	Base Camp Mt Kangju Kangri	05 hrs	Base Camp Establishment
(x)	01 Aug 2025	Move To Summit Camp	Base Camp	Summit Camp	12 hrs	Load Ferry & Route Opening
(xi)	02 Aug 2025	Summited Mt Kangju Kangri	Summit Camp	Summit of Mt Kangju Kangri – 6710 M	07 hrs	Summited Mt Kangju Kangri at 1513 hrs on 02 Aug 2025 <b><u>Grid Reference</u></b> <b><u>N 33°43'32"</u></b> <b><u>E 78°31'39"</u></b> <b><u>Recorded in GPS</u></b>

## 6. **Summit Description:**

- (a) The Mt Merag, located in the breathtaking Pangong Tso region of Ladakh, is a majestic mountain range featuring multiple peaks, including Karakoram Range of mountains and Mt Kangju Kangri, as well as numerous unnamed peaks exceeding 6,000 meters in elevation. The summit offers a challenging climb, characterized by rugged terrain and demanding conditions. However, the breathtaking views of the surrounding serene lakes, valleys, and mountains make it a truly rewarding experience. From the summit, climbers can enjoy panoramic views of the Pangong range, including Kangju Kangri, and the vast expanse of the Ladakh landscape.
- (b) After successfully summiting Mt Khyam Tso Massif, the Team JIM & WS took a recovery rest for approximately one week before planning their next summit of Mt Merag & Mt Kangju Kangri. This expedition was a joint effort by all three premier National Mountaineering Institutes. The joint team assembled at Sonamarg and, after a few days of acclimatization and preparation, was flagged off by Colonel Hem Chandra Singh, Principal JIM&WS and Team Leader, on July 24, 2025. The team then proceeded to Leh, halted for a night, and on July 25, 2025, moved from Leh to the roadhead camp of Mt Merag near Parma Village at Pangong Tso region of Ladakh.
- (c) On July 26, 2025, the joint team embarked on an acclimatization cum reconnaissance trip to Mt Merag Massif and returned to the roadhead camp. The following day, July 27, 2025, the team moved towards the Base Camp of Mt Merag, a journey that took approximately 3-4 hours. The weather was sunny, and the route to the base camp involved crossing flowing mountain streams, navigating through up-and-down scree slopes, and maneuvering around large boulders.
- (d) On July 28, 2025, the team conducted a reconnaissance cum route opening of Mt Merag – I. The route opening team negotiated scree slopes, big boulder areas, moraines, and rockfall zones towards the summit of Mt Merag – I. After fixing ropes for approximately 300-400 meters, the team encountered significant risks due to loose rocks and scree, a thin broken arête on one side, and a steep snowy slope on the other that could potentially trigger slab avalanches. Given the high risk of casualty, the team leader decided to abandon the summit attempt of Mt Merag – I and instead opted to summit Mt Merag – III. The team returned to base camp.
- (e) On July 29, 2025, the team departed from base camp at 0200 hours. The route to the summit of Mt Merag – III presented numerous challenges, including scree slopes, big boulders, glacial streams, and steep slopes. As the team ascended, they encountered a steep scree slope and loose rocky terrain about 200 meters below the summit, which required careful navigation with rope up. The team also faced extreme chill winds.

Despite these challenges, the joint team successfully summited Mt Merag – III on July 29, 2025, at 0855 hours. The clear weather provided breathtaking views of Pangong Lake and the surrounding Pangong Tso Valley from the summit.

- (f) Following the successful summit of Mt Merag – III, the joint team shifted to the roadhead camp of Mt Kangju Kangri, located in the stunning Pangong Tso region known for its breathtaking landscapes and challenging climbing conditions. On July 30, 2025, the team conducted a reconnaissance of Mt Kangju Kangri, departing from the roadhead camp at 0815 hours and returning at 1645 hours.
- (g) On July 31, 2025, the team shifted from the roadhead camp to the base camp of Mt Kangju Kangri, a journey that took approximately 4-5 hours. During the trek, the team navigated along the shore of the lake and utilized a drone to scout the routes and approach towards the summit. On August 1, 2025, the team departed for the summit camp at 0630 hours. After establishing the summit camp, the team divided into two groups: one group handled load ferrying to the summit camp, while the other group focused on route opening and rope fixing towards the summit of Mt Kangju Kangri. The route was particularly hazardous, involving navigation through up-and-down slopes with loose rocks and scree, as well as crossing glacial streams and glacier portions. Despite encountering extreme weather and deadly winds, the route opening team successfully opened route towards summit and returned by 1815 hours. Meanwhile, the load ferry team continued their efforts and stayed at the base camp to support the summit attempt.
- (h) On August 2, 2025, the team at the summit camp continued with further rope fixing, while the team at the base camp began their ascent towards the summit. Both teams eventually rejoined and proceeded together for the summit attempt. Despite encountering extreme weather conditions, including cold temperatures and deadly winds, the resilient joint team persevered through the challenging environment. As snowfall commenced and whiteout conditions worsened, the team pushed beyond their limits, ultimately reaching the summit of Mt Kangju Kangri at 1513 hours. Following a safe descent in the adverse conditions, the team returned to the summit camp, closed it, and safely made their way back to the base camp.
- (i) The ascent to both peaks involved challenging climbs through demanding terrain, including icy fields, big boulders, loose rocks, scree, and glaciated streams. Climbers faced extreme weather conditions and wind-chill factors, making the long, steep scree and rocky slopes particularly difficult. However, the summits rewarded climbers with breathtaking views of the surrounding landscape, including the Karakoram Range, Pangong Tso range, and Pangong Lake.

- (j) During the descent, the team navigated steep slopes with loose scree and boulders, including glacier areas and glaciated streams. The successful summit of both peaks pushed Team JIM&WS to its limits, testing their mental and physical endurance.

7. **Challenges Faced:**

- (a) Hazardous conditions due to big boulders/ rock falls, loose scree, glacial streams, open and hidden crevasses.
- (b) Long Approach during Load ferry and summit.
- (c) Extreme weather conditions including wind-chill factor, white out and deadly winds during climbing.

8. **Achievements:**

- (a) Successful summit of Mt. Merag - III 6480 M & Mt. Kangju Kangri 6710 Mon 29 July and 02 Aug 2025 respectively.
- (b) The expedition created a record of first ascent of Mt Merag – III and successful summit on Mt kangju Kangri after a gap of 15 years.
- (c) Potential to enhance adventure tourism in the country and especially in border areas of Ladakh (UT) and Jammu Kashmir (UT).

9. **Conclusion :**

- (a) The Mt Merag – III and Mt Kangju Kangri Joint Expedition 2025 led by Colonel Hem Chandra Singh and a testament to the resilience and determination of the team members from JIM and WS, NIM and HMI.
- (b) Despite facing challenges by big boulders/ steep scree slopes and extreme weather conditions, the team successfully scaled the both peaks. This achievement is expected to inspire and attract more youth towards adventure tourism and mountaineering in the country and especially in Jammu and Kashmir (UT).
- (c) The expedition was dedicated to the best Instructors of the premier National Mountaineering Institute and the indomitable human spirit that drives individuals to surpass their limits.
- (d) It served as a learning journey, showcasing the power of calculated risk and faith in achieving great feats.

Jai Hind!

(Hem Chandra)  
Colonel  
Principal, JIM & WS

10. Photographs:



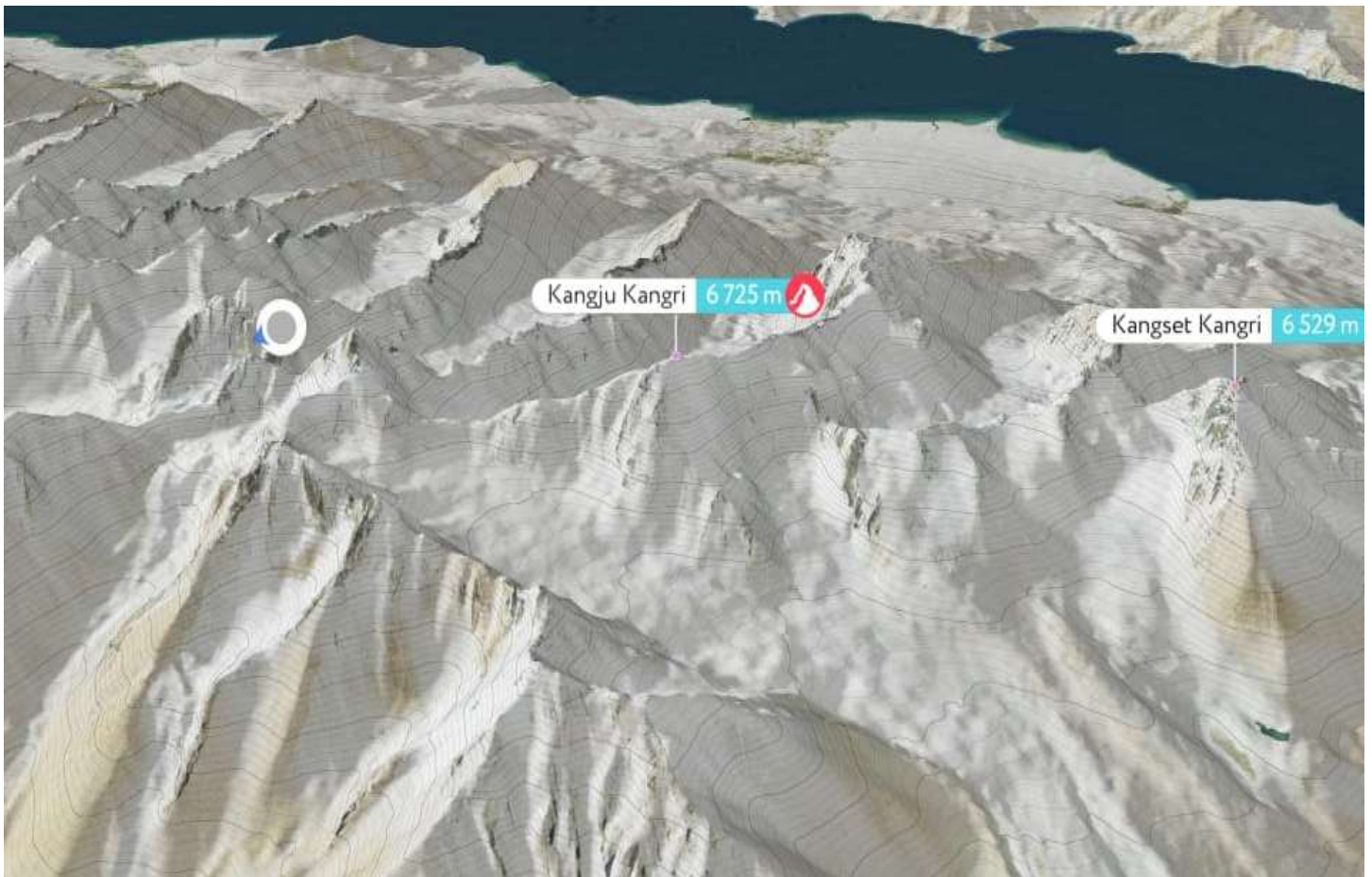
PHOTO BY TEAM JIM&WS



PHOTO FROM PEAK VISOR APPLICATION



**PHOTO BY TEAM JIM&WS**



**PHOTO FROM PEAK VISOR APPLICATION**

## MT Merag – III 6480 METERS



**FINAL PREPARATION BEFORE MOVE  
ON 23 JULY 2025 AT 1100 HRS**



**FLAG OFF BY COLONEL HEM CHANDRA SINGH, PRINCIPAL JIM&WS  
(TEAM LEADER) ON 24 JULY 2025 AT 0730 HRS**



**ESTABLISHED ROAD HEAD CAMP NEAR PARMA VILLAGE  
ON 25 JULY 2025 AT 1930 HOURS**



**RECCE CUM ACCLIMATIZATION AT ROAD HEAD CAMP  
ON 26 JULY 2025 AT 0930 HOURS**



**POOJA AT ROAD HEAD CAMP BEFORE MOVE FOR BASE CAMP  
ON 27 JULY 2025 AT 0700 HOURS**



**NEGOTIATING SCREE AREA TOWARDS BASE CAMP  
ON 27 JULY 2025 AT 0920 HOURS**



**TEAM AT BASE CAMP ON 27 JULY 2025 AT 1311 HOURS**



**ESTABLISHED BASE CAMP  
ON 27 JULY 2025 AT 1330 HOURS**



**TEAM READY TO MOVE FOR ROUTE OPENING CUM RECCE OF MT MERAG – I ON 28 JULY 2025 AT 0600 HOURS**



**NEGOTIATING STEEP BOULDER SLOPE TOWARDS MT MERAG – I ON 28 JULY 2025 AT 0620 HOURS**



**TEAM DECIDED TO SCALE MT MERAG – III RATHER THAN MT MERAG - I  
ON 28 JULY 2025 AT 1300 HOURS**



**TEAM BACK TO BASE CAMP ON 28 JULY 2025 AT 1440 HOURS**



**BRIEFING ABOUT SUMMIT PLAN OF MT MERAG – III BY TEAM LEADER  
ON 28 JULY 2025 AT 1500 HOURS**



**JOINT TEAM READY TO MOVE FOR SUMMIT OF MT MERAG – III  
ON 29 JULY 2025 AT 0200 HOURS**



**NEGOTIATING THE DEADLY SLOPE TOWARDS THE SUMMIT**  
**ON 29 JULY 2025 AT 0450 HOURS**



**NEGOTIATING THE BOULDER AREA TOWARDS THE SUMMIT**  
**ON 29 JULY 2025 AT 0520 HOURS**



**NEGOTIATING THE STEEP WALL TOWARDS THE SUMMIT**  
**ON 29 JULY 2025 AT 0615 HOURS**



**NEGOTIATING THE SCREE SLOPE TOWARDS THE SUMMIT**  
**ON 29 JULY 2025 AT 0721 HOURS**



**NEGOTIATING THE SNOWY SLOPE TOWARDS THE SUMMIT**  
**ON 29 JULY 2025 AT 0818 HOURS**



**JOINT TEAM NEGOTIATING SNOW RIDGE NEAR THE SUMMIT**  
**ON 29 JULY 2025 AT 0845 HOURS**



**JOINT TEAM SUCCESSFULLY SCALED MT MERAG - III**  
**ON 29 JULY 2025 AT 0855 HOURS**



**POOJA ON THE SUMMIT MT MERAG - III**  
**ON 29 JULY 2025 AT 0855 HOURS**



**TEAM ON THE SUMMIT OF MT MERAG - III 6480 MTR**  
**AT 0810 HRS ON 06 JULY 2025**  
**GRID REFERENCE N 33°47.2049' E 078°29.3223') RECORDED IN GPS**



**TEAM LEADER HOISTED BHARTIYA TIRANGA ON THE SUMMIT OF**  
**MT MERAG – III 6480 MTR AT 1022 HRS ON 09 JULY 2025**



**HEIGHT RECORDED 6493 MTRS ON 29 JULY 2025 &  
GRID REFERENCE N 33°47.2049' E 078°29.3223' RECORDED IN GPS**

**HEIGHT RECORDED 6493 MTRS &  
GRID REFERENCE  
N 33°47.2049' E 078°29.3223' IN GPS**



**AERIAL VIEW OF MT MERAG – III**  
**ON 29 JULY 2025 BY QUADCOPTER (DRONE)**



**JOINT TEAM SAFELY DESCENDED TO BASE CAMP**  
**AT 1530 HRS ON 29 JULY 2025**

**MT Kangju Kangri – 6710 METERS**



**TEAM MOVED TO MT KANGJU KANGRI ROAD HEAD ON 29 JULY 2025 AT 1600 HOURS**



**ON 30 JULY 2025 JOINT TEAM DID RECCE  
FOR BASE CAMP**



**POOJA BEFORE MOVE TO BASE CAMP  
ON 31 JULY 2025 AT 0700 HRS**



**ESTABLISHED BASE CAMP NEAR MT KANGJU KANGRI GLACIER TARN ON 31 JULY 2025 AT 1420 HOURS**



**TEAM READY TO MOVE FOR LOAD FERRY CUM ROUTE OPENING  
TOWARDS THE SUMMIT CAMP ON 01 AUGUST 2025 AT 0700 HOURS**



**TOWARDS THE SUMMIT CAMP IN EXTREME WEATHER  
ON 01 AUGUST 2025 AT 0740 HOURS**



**NEGOTIATING THE GLACIER TOWARDS THE SUMMIT CAMP IN  
ON 01 AUGUST 2025 AT 1200 HOURS**



**JOINT TEAM REACHED SUMMIT CAMP  
ON 01 AUGUST 2025 AT 1300 HOURS**



**ONE TEAM TOWARDS THE BASE CAMP IN EXTREME WEATHER  
FOR LOAD FERRY ON 01 AUGUST 2025 AT 1630 HOURS**



**POOJA AT SUMMIT CAMP FOR SUCCESSFUL SUMMIT  
BEFORE MOVE ON 02 AUGUST 2025 AT 0600 HOURS**



**TOWARDS THE SUMMIT**  
**ON 02 AUGUST 2025 AT 0650 HOURS**



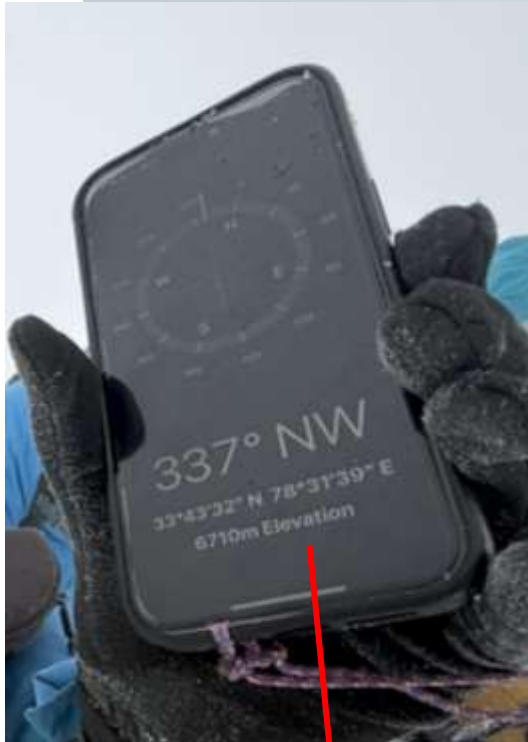
**NEGOTIATING THE DEADLY SLOPE IN EXTREME WEATHER**  
**ON 02 AUGUST 2025 AT 1200 HOURS**



**JOINT TEAM TAKING SHELLED OF ROCKY POSTURE IN DEADLY WINDS NEAR SUMMIT ON 02 AUGUST 2025 AT 1450 HOURS**



**TEAM ON THE SUMMIT OF MT KANGJU KANGRI – 6710 MTR IN EXTREME WEATHER ON 02 AUGUST 2025 AT 1513 HRS GRID REFERENCE N 33°43'32" E 78°31'39") RECORDED IN GPS**



**HEIGHT RECORDED 6710 MTRS &  
GRID REFERENCE  
N 33°43'32" E 78°31'39" IN GPS**

**HEIGHT RECORDED 6710 MTRS ON 02 AUGUST 2025 &  
GRID REFERENCE N 33°43'32" E 78°31'39" RECORDED IN GPS**

SUMMIT OF  
MT KANGJU KANGRI



**JOINT TEAM SAFELY DESCENDED TO SUMMIT CAMP**  
**AT 1900 HRS ON 02 AUGUST 2025**



**GPS TRACKING OF MT MEERAG - III IN TEAM LEADERS WATCH**  
**ON 29 JULY 2025**



**GPS TRACKING OF MT KANGJU KANGRI IN TEAM LEADERS WATCH**  
**ON 02 AUGUST 2025**

